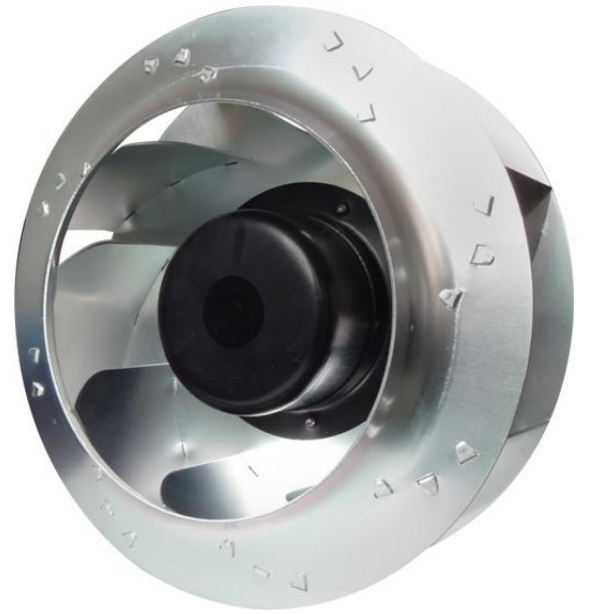
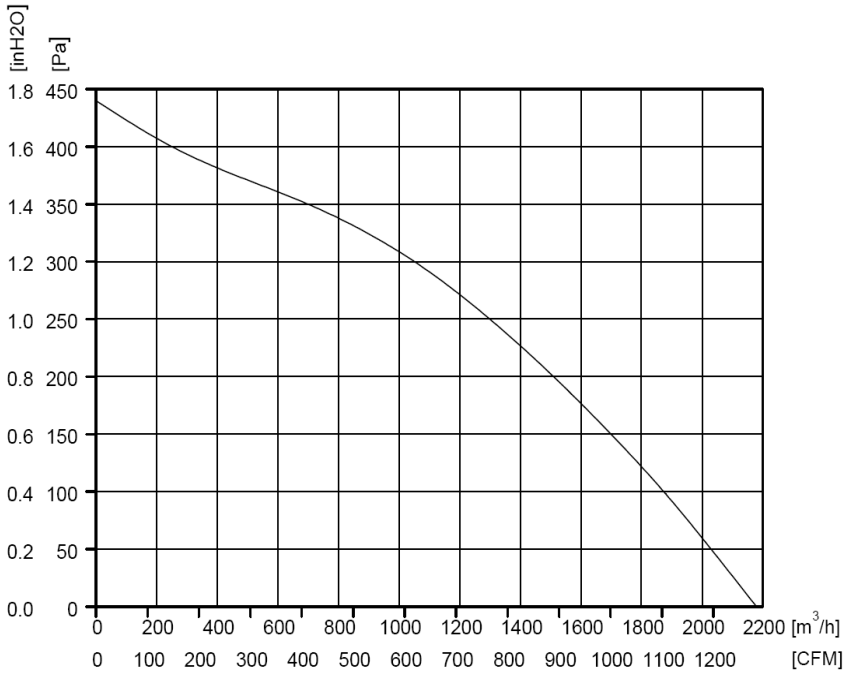


DC Centrifugal Fan-Backward Curved Ø280×150



| Model | Rated Voltage | Operating Voltage | Rated Current | Rated Power | Rated Speed | Air Flow | Air pressure | Noise Level | Perm.Amb. Temp. | Weight |
|----------------|---------------|-------------------|---------------|-------------|-------------|-------------------|--------------|-------------|-----------------|--------|
| Part NO. | VDC | VDC | A | W | RPM | M ³ /H | Pa | dBA | °C | Kg |
| HB280-102D048H | 48 | 36~57 | 2.83 | 136 | 1980 | 2180 | 440 | 70 | -25~+60 | 3.3 |

INSTRUCTIONS:

Motor Type: EC brushless external rotor motor
 Type of Protection: IP44
 Insulation Class: B
 Speed Control: 0-10VDC/PWM
 Approvals: CE

